



PIPE & CASING

THE BEST ROUTE TO QUALITY PIPE

101 HAS IT ALL.



101
101 PIPE & CASING

101 Vertical Fabrication
offers everything
needed to create
an efficient,
cost-effective water
management and
delivery system.

THE SIGN OF QUALITY

101 Pipe & Casing Founder and CEO Fidel J. Nabor named the company after Southern California's arterial freeway system. Just as the 101 is a well-known vehicle pipeline – 101 Pipe & Casing is your pipeline for quality products, efficiency and people-oriented service.

In response to your needs, our product line has grown from pipe and casing to include plain-end pipe, threaded pipe, fabricated pipe and precision-fit fabricated parts.

Most of our threaded Line Pipe (up to 20" O.D.) is sold to the water well industry as Pump Column. Our threaded (or grooved) Ductile Iron Pipe is sold mainly to waterworks jobbers.

At our 6.5-acre Fontana, California plant, 101 Vertical Fabrication, we provide in-house fabricating and machining, exterior coatings, internal coatings, angles and bends, couplings and fittings and more.

Our job is to make your job as easy and hassle-free as possible. 101 is committed to controlling costs, ensuring on-time delivery and providing consistent product quality in every pipe, casing, fitting and component in your system.



STEEL PIPE

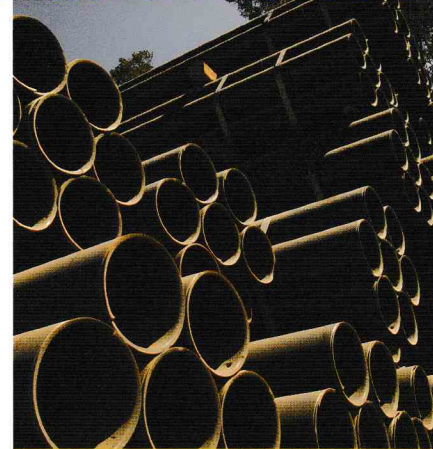
101 Pipe offers one of the most extensive and complete lines of carbon steel pipe available from stock in the eleven western states. Our inventory includes line pipe in sizes from 4" to 48" in diameter, both welded and seamless, import and domestic. We stock the same sizes in a variety of grades and specifications – the most common being A-53 GR B and API-5L GR B.

For less critical applications, we offer very competitive pricing on structural grade steel pipe such as A-252, commercial grade, mill overrun and limited service. We also offer extensive threading capabilities (8-Round and 8-V), grooving and beveling as well as torch, rolla and machine cutting.

CASING

At 101, casing is equally as important as pipe. Our goal is to make all of your installations come together faster, easier and at less expense.

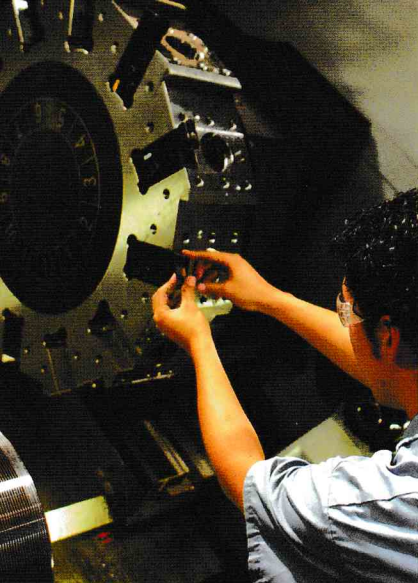
We do this by providing virtually every water well casing component you need – in a range of sizes, grades and specifications to meet your needs and budget. It's competitively priced, onsite and ready for immediate shipment.



We stock carbon steel Line Pipe from 4" to 48" in various wall thicknesses and grades.



800-332-9101
www.101pipe.com



Customers often say that our pump column goes together and comes apart better than any other brand.



PUMP COLUMN

101 Pipe & Casing is also one of the leading pump column manufacturers in the United States. We have complete machining and threading capabilities, managed by skilled and experienced technicians, dedicated to producing the highest quality Pump Column and Water Works products available anywhere in the industry.

Our typical pump column is made only from prime, certified pipe such as A53-GRB or API-5L GRB. We manufacture our own quality pump column couplings, 4" – 16", using only prime seamless coupling stock. Threaded ends (without a coupling) are always well-greased and covered with a snug thread protector.

We thread both carbon and stainless steel pipe (up to 20" O.D.), to all major pump manufacturers' specifications. We cut the precision threads on either our state-of-the-art CNC Threading Machine or our stationary and receding diehead machines. Our pump column, with 8-V butt threads, or 8-V $\frac{3}{4}$ " taper threads, meets or exceeds the rigid AWWA E101 specification. Flanged column (carbon and stainless) are custom fabricated to your specifications, complete with integral spiders, registered ends, protective coatings and linings as required.

101 Pipe is a leading manufacturer of 8-round deep-set threaded column. We have adapted this exceptional oil field thread to work efficiently in your water well application.

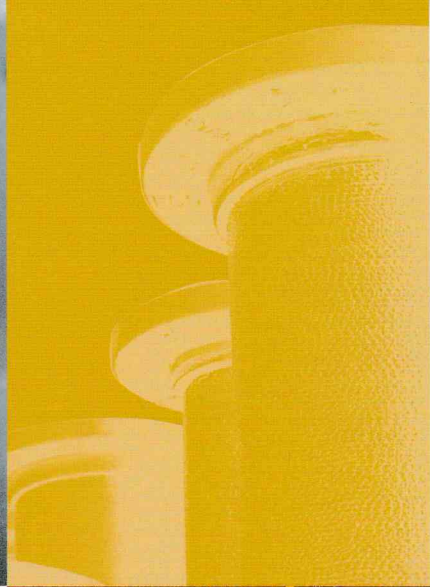
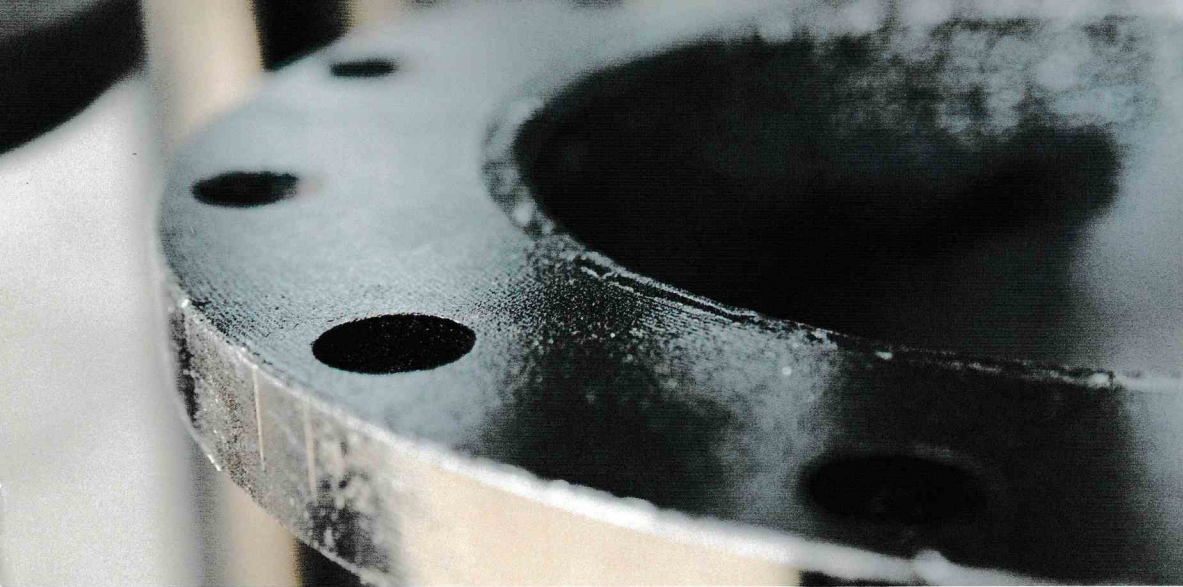


INNER COLUMN

Along with our outer column, we offer a complete line of oil-lubricated tube and shaft assemblies, and water-lubricated open line shaft assemblies. We manufacture our inner column to all major pump company specifications. Individual components such as shafts & shaft couplings, bronze & graphite bearings, tubes, sleeves and water lube spiders are sold separately. 101 also specializes in exotic materials and custom configurations.



800-332-9101
www.101pipe.com



**We maintain
an inventory of
Ductile Iron Pipe
in diameters from
3" - 36".**



DUCTILE IRON

101 Pipe & Casing's reputation for quality materials, prompt service and meticulous workmanship are our highest priority for the threaded and grooved ductile iron pipe spools. All threaded pipe ends are separately machined to match the threads of each individual ductile iron flange. This creates a near-perfect fit with face-to-face measurements conforming to the specified length dimensions.

All threaded surfaces are coated with a threading compound/sealant, then machine power-tightened and aligned. Unless otherwise specified, all of our ductile iron pipe has cement lining on the interior wall. Other linings such as glass, epoxy, polyethylene or bare can be supplied as requested. All ductile iron pipe used has a class 53 minimum thickness.

Tight industry tolerances restrict us from offering threaded pipe with loose flanges unless the customer waives our responsibility for meeting specifications.

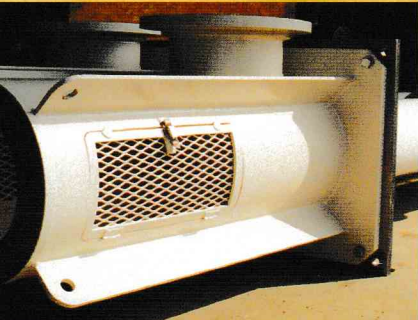
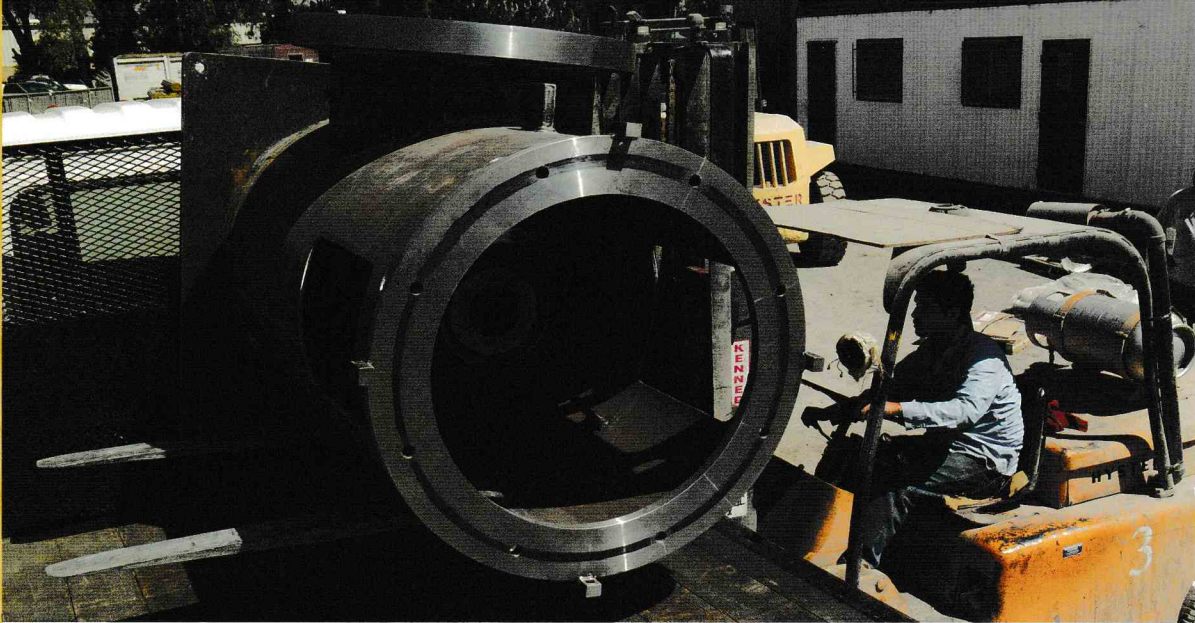
The following specifications are met or exceeded in the manufacturing of our flanged or grooved spools:

MATERIAL SPECIFICATIONS

AWWA C 151 or ANSI A 21.5	Ductile iron centrifugally cast in metal mold
AWWA C 104 or ANSI A 21.4	Cement mortar lining for ductile iron pipe
ASTM 536	Ductile iron flanges
ANSI B2.1 (NPT)	Threaded for flanges class 125 & 250
ANSI B 16.1	Facing and drilling for class 125 flanges
ANSI B 16.6	Facing and drilling for class 250 flanges

FABRICATION SPECIFICATIONS

AWWA C 115 or ANSI 21.15	Ductile iron spool fabrication
ANSI B2.1 (NPT)	Threaded for ductile iron pipe
ANSI A 21.15 Section 15-8.4	Flange two-hole
AWWA C 115 or ANSI A 21.15	Flange face-to-face parallelism
AWWA C 606	Pipe grooving
+/-1/16 Inch	Overall spool lengths



WATER WELL FABRICATION

Our machine and fabrication shops work together to build various well head parts for the vertical turbine industry. Each component is custom made to individual job specifications and quality inspected throughout the manufacturing process.

- *Fabricated Discharge Heads:
L-Type, F-Type, T-Type*
- *Fabricated Elbows –
Above- and Below-Base*
- *Flanged Column
(with integral bearing retainers)*
- *Flanged Taper Column*
- *Suction Barrels*
- *Motor Stands*
- *Reducing Motor Plates*
- *Sole Plates*
- *Submersible Surface Elbows*
- *Submersible Flanged Column*
- *Registered Ends*

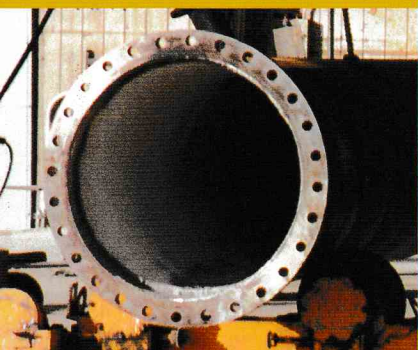


WATER WORKS

Products of our water works division are sold to pipeline contractors, municipalities, various water agencies and water works jobbers and suppliers throughout North America.

In addition to complete in-house welding, machining and fabrication operations, we can also provide estimating and comprehensive shop drawings for:

- *Fabricated Fittings (to AWWA C-208 and M-11 manual)*
- *Pressure-reducing, Blow-off and Turnout Stations*
- *Steel and Concrete Reservoir Piping*
- *Water and Sewage Steel Piping Plants*
- *Water and Sewage Pumping Stations*
- *Completely Engineered Pipelines with Fittings*
- *Stainless Steel Pipe Fabrication*



All major pump companies are sticklers for precision and accuracy in every system component. It is our mission to meet and exceed these rigid requirements, and to produce finished products that are second-to-none in quality, performance and on-time delivery.

STANDARD AND CUSTOM PRODUCTS

Along with fabricating and full machine shop capabilities, we offer a wide array of standard products and custom services.

- Protective Linings & Coatings
- Liquid & Fusion Epoxy Coatings
- Primers & Paints
- Cement
- Coal-Tar Enamel
- Blasting & Galvanizing

SPECIALTY PRODUCTS

- Steel Butt-Straps
- Steel Reinforcing Collars
- Steel Full-Wrappers
- Harness Assemblies
- Steel Pipe Supports
- Steel Weld Nozzles
- Victaulic Collars (C, D, & E)
- Victaulic Couplings
- Flanged Column Pipe
- Flanged Pipe Tapers
- Pump Motor Yokes
- Pump Discharge Heads



FITTINGS & FLANGES

FITTINGS

- Threaded Steel Couplings
- Threaded Steel Plugs
- Threaded Steel Nipples
- Steel Weld Fittings
- Stainless & Carbon Steel Flanges
- Custom Flanges & Fittings

LIGHT WALL GAUGE PIPE

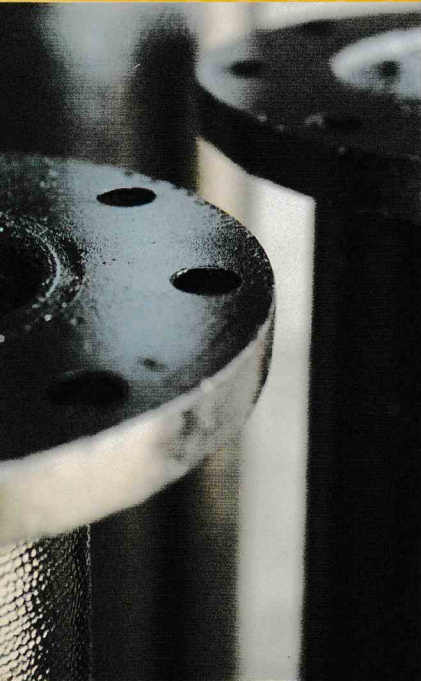
- Bare Steel
- Asphalt Wrapped
- Asphalt Dipped
- Cement Mortar-Lined
- Cement Mortar Coated
- Plain End, Weld-Bell End
- Rubber O-Ring End
- Steel Pipe – Schedule 10 Through XXH



We welcome custom design work, special configurations, exotic materials and special coatings.



800-332-9101
www.101pipe.com



101 – THE BEST ROUTE FOR ALL OF YOUR WATER WELL NEEDS

Make 101 Pipe & Casing and 101 Vertical Fabrication your one-stop supplier for every water works project. We will transform your vision and ideas into a cost-effective solution – a finished fabricated piping system that is custom-engineered to your needs.

Contact us today for a consultation.

800-332-9101

101 Pipe & Casing's 2009 Time Attack Subaru STI featured on the cover of DSPORT Magazine. Follow us at www.nniracing.com

Photo courtesy of DSPORT Magazine www.dsportmag.com



CORPORATE HEADQUARTERS

30300 Agoura Road, Suite 240, Agoura Hills, CA 91301

800.332.9101

FONTANA

10255 Beech Avenue, Fontana, CA 92335

909.428.6000

702.651.6101

ARIZONA

4809 E Thistle Landing Drive, Suite 107, Phoenix, AZ 85044

877.585.1101

NEW MEXICO

5609 Alameda Place NE, Albuquerque, NM 87113

800.951.9101



PIPE & CASING

800-332-9101

www.101pipe.com